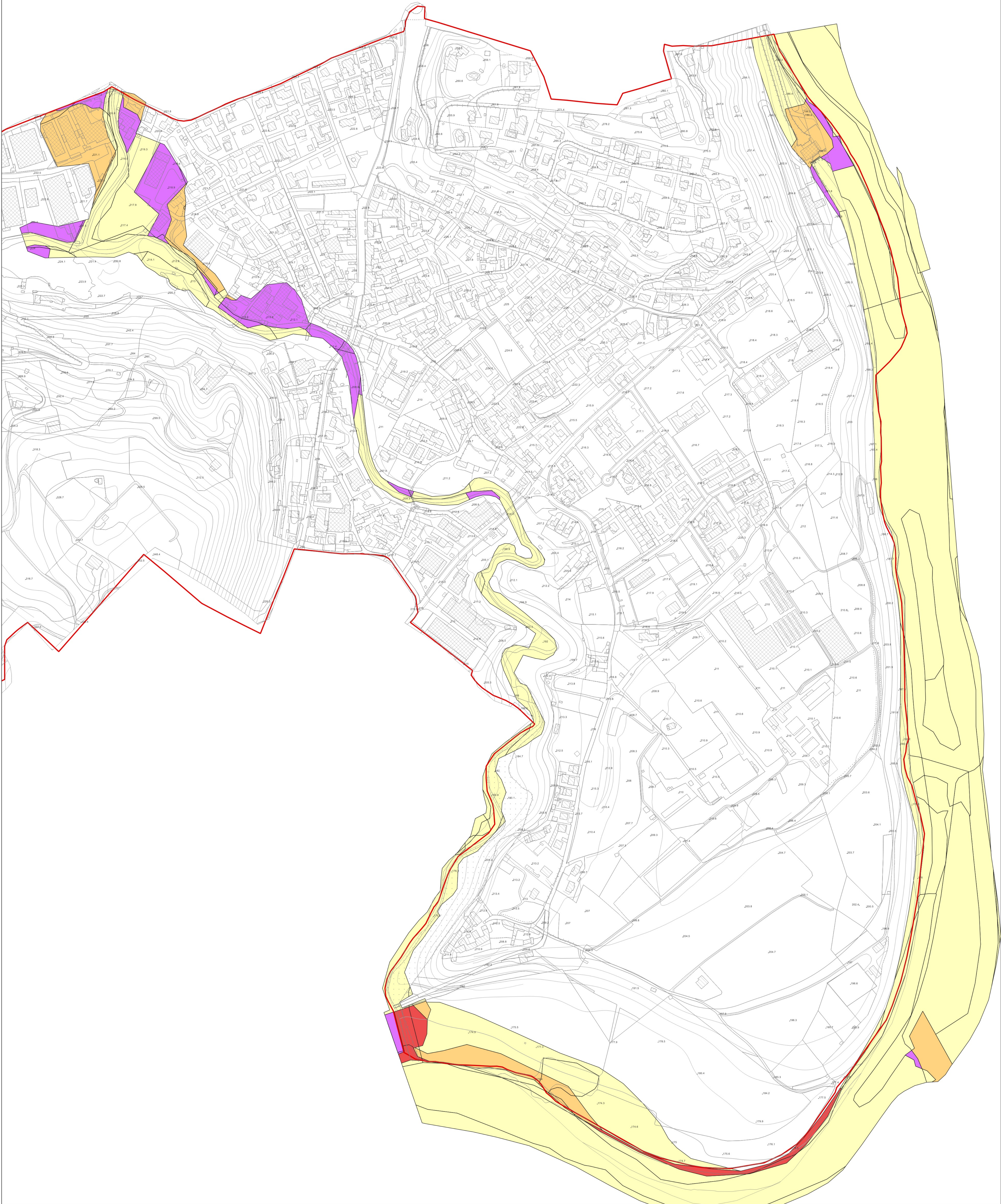




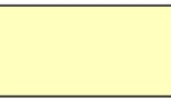



Aggiornamento della componente geologica, idrogeologica e sismica del P.G.T.
ai sensi della D.G.R. 9/2616 del 30 novembre 2011 e s.m.i.

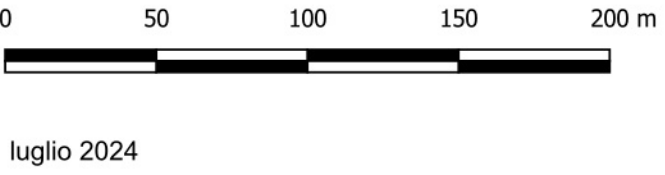
CARTA DEL RISCHIO

TAV. 6



P.G.R.A. - Direttiva alluvioni 2007/60/CE

-  R1 - Rischio moderato
-  R2 - Rischio medio
-  R3 - Rischio elevato
-  R4 - Rischio molto elevato



Scala 1:2.500

luglio 2024

Eurogeo - Bergamo

